

# Service Provider Multihoming



ISP Workshops

# Service Provider Multihoming

---

- ❑ Previous examples dealt with loadsharing inbound traffic
  - Of primary concern at Internet edge
  - What about outbound traffic?
- ❑ Transit ISPs strive to balance traffic flows in both directions
  - Balance link utilisation
  - Try and keep most traffic flows symmetric
  - Some edge ISPs try and do this too
- ❑ The original “Traffic Engineering”

# Service Provider Multihoming

---

- Balancing outbound traffic requires inbound routing information
  - Common solution is “full routing table”
  - Rarely necessary
    - Why use the “routing mallet” to try solve loadsharing problems?
  - “Keep It Simple” is often easier (and \$\$\$ cheaper) than carrying N-copies of the full routing table

# Service Provider Multihoming

## MYTHS!!

---

### Common MYTHS

1. **You need the full routing table to multihome**
  - People who sell router memory would like you to believe this
  - Only true if you are a transit provider
  - Full routing table can be a significant hindrance to multihoming
2. **You need a BIG router to multihome**
  - Router size is related to data rates, not running BGP
  - In reality, to multihome, your router needs to:
    - ▣ Have two interfaces,
    - ▣ Be able to talk BGP to at least two peers,
    - ▣ Be able to handle BGP attributes,
    - ▣ Handle at least one prefix
3. **BGP is complex**
  - In the wrong hands, yes it can be! Keep it Simple!

# Service Provider Multihoming: Some Strategies

---

- ❑ Take the prefixes you need to aid traffic engineering
  - Look at NetFlow data for popular sites
- ❑ Prefixes originated by your immediate neighbours and their neighbours will do more to aid load balancing than prefixes from ASNs many hops away
  - Concentrate on local destinations
- ❑ Use default routing as much as possible
  - Or use the full routing table with care

# Service Provider Multihoming

---

## □ Examples

- One upstream, one local peer
- One upstream, local exchange point
- Two upstreams, one local peer
- Three upstreams, unequal link bandwidths

## □ Require BGP and a public ASN

## □ Examples assume that the local network has their own /19 address block

# Service Provider Multihoming



One upstream, one local peer

# One Upstream, One Local Peer

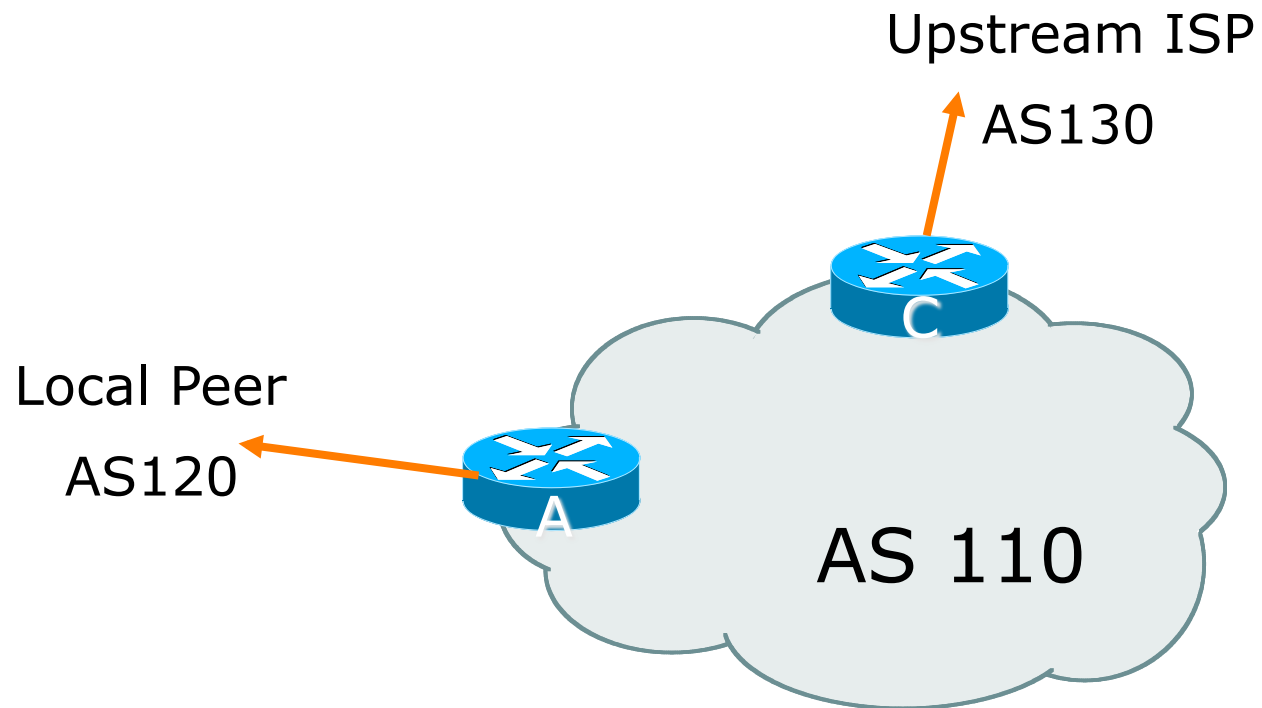
---

- ❑ Very common situation in many regions of the Internet
- ❑ Connect to upstream transit provider to see the “Internet”
- ❑ Connect to the local competition so that local traffic stays local
  - Saves spending valuable \$ on upstream transit costs for local traffic



# One Upstream, One Local Peer

---



# One Upstream, One Local Peer

---

- ❑ Announce /19 aggregate on each link
- ❑ Accept default route only from upstream
  - Either 0.0.0.0/0 or a network which can be used as default
- ❑ Accept all routes the local peer originates

# One Upstream, One Local Peer

## ❑ Router A Configuration

```
router bgp 110
  network 121.10.0.0 mask 255.255.224.0
  neighbor 122.102.10.2 remote-as 120
  neighbor 122.102.10.2 prefix-list my-block out
  neighbor 122.102.10.2 prefix-list AS120-peer in
!
ip prefix-list AS120-peer permit 122.5.16.0/19
ip prefix-list AS120-peer permit 121.240.0.0/20
ip prefix-list my-block permit 121.10.0.0/19
!
ip route 121.10.0.0 255.255.224.0 null0 250
```

Prefix filters  
inbound

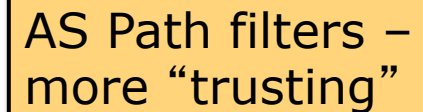


# One Upstream, One Local Peer

## ❑ Router A – Alternative Configuration

```
router bgp 110
  network 121.10.0.0 mask 255.255.224.0
  neighbor 122.102.10.2 remote-as 120
  neighbor 122.102.10.2 prefix-list my-block out
  neighbor 122.102.10.2 filter-list 10 in
!
ip as-path access-list 10 permit ^(120_)+$
!
ip prefix-list my-block permit 121.10.0.0/19
!
ip route 121.10.0.0 255.255.224.0 null0
```

AS Path filters –  
more “trusting”



# One Upstream, One Local Peer

---

## ❑ Router C Configuration

```
router bgp 110
  network 121.10.0.0 mask 255.255.224.0
  neighbor 122.102.10.1 remote-as 130
  neighbor 122.102.10.1 prefix-list default in
  neighbor 122.102.10.1 prefix-list my-block out
!
ip prefix-list my-block permit 121.10.0.0/19
ip prefix-list default permit 0.0.0.0/0
!
ip route 121.10.0.0 255.255.224.0 null0
```

# One Upstream, One Local Peer

---

- ❑ Two configurations possible for Router A
  - Filter-lists assume peer knows what they are doing
  - Prefix-list higher maintenance, but safer
  - Some ISPs use **both**
- ❑ Local traffic goes to and from local peer, everything else goes to upstream



# Aside:

## Configuration Recommendations

---

### ❑ Private Peers

- The peering ISPs exchange prefixes they originate
- Sometimes they exchange prefixes from neighbouring ASNs too

- ❑ Be aware that the private peer eBGP router should carry only the prefixes you want the private peer to receive
  - Otherwise they could point a default route to you and unintentionally transit your backbone

# Service Provider Multihoming



One upstream, Local Exchange  
Point



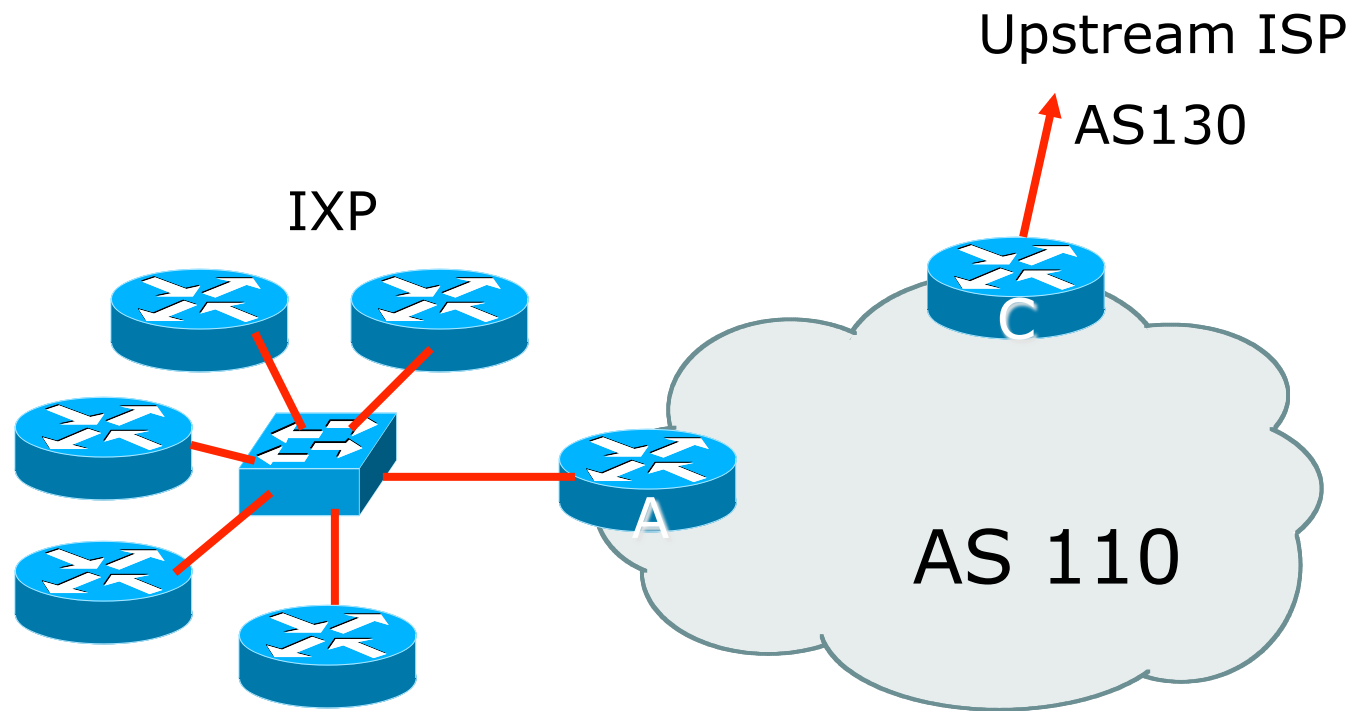
# One Upstream, Local Exchange Point

---

- ❑ Very common situation in many regions of the Internet
- ❑ Connect to upstream transit provider to see the “Internet”
- ❑ Connect to the local Internet Exchange Point so that local traffic stays local
  - Saves spending valuable \$ on upstream transit costs for local traffic
- ❑ This example is a scaled up version of the previous one

# One Upstream, Local Exchange Point

---



# One Upstream, Local Exchange Point

---

- ❑ Announce /19 aggregate to every neighbouring AS
- ❑ Accept default route only from upstream
  - Either 0.0.0.0/0 or a network which can be used as default
- ❑ Accept all routes originated by IXP peers

# One Upstream, Local Exchange Point

---

## ❑ Router A Configuration

```
interface fastethernet 0/0
  description Exchange Point LAN
  ip address 120.5.10.1 mask 255.255.255.224
!
router bgp 110
  neighbor ixp-peers peer-group
  neighbor ixp-peers prefix-list my-block out
  neighbor ixp-peers remove-private-AS
  neighbor ixp-peers send-community
  neighbor ixp-peers route-map set-local-pref in
...next slide
```

# One Upstream, Local Exchange Point

---

```
neighbor 120.5.10.2 remote-as 100
neighbor 120.5.10.2 peer-group ixp-peers
neighbor 120.5.10.2 prefix-list peer100 in
neighbor 120.5.10.3 remote-as 101
neighbor 120.5.10.3 peer-group ixp-peers
neighbor 120.5.10.3 prefix-list peer101 in
neighbor 120.5.10.4 remote-as 102
neighbor 120.5.10.4 peer-group ixp-peers
neighbor 120.5.10.4 prefix-list peer102 in
neighbor 120.5.10.5 remote-as 103
neighbor 120.5.10.5 peer-group ixp-peers
neighbor 120.5.10.5 prefix-list peer103 in
...next slide
```

# One Upstream, Local Exchange Point

---

!

```
ip prefix-list my-block permit 121.10.0.0/19
```

```
ip prefix-list peer100 permit 122.0.0.0/19
```

```
ip prefix-list peer101 permit 122.30.0.0/19
```

```
ip prefix-list peer102 permit 122.12.0.0/19
```

```
ip prefix-list peer103 permit 122.18.128.0/19
```

!

```
route-map set-local-pref permit 10
```

```
  set local-preference 150
```

!

# One Upstream, Local Exchange

---

- ❑ Note that Router A does not generate the aggregate for AS110
  - If Router A becomes disconnected from backbone, then the aggregate is no longer announced to the IX
  - BGP failover works as expected
- ❑ Note the inbound route-map which sets the local preference higher than the default
  - This is a visual reminder that BGP Best Path for local traffic will be across the IXP

# One Upstream, Local Exchange Point

---

## ❑ Router C Configuration

```
router bgp 110
  network 121.10.0.0 mask 255.255.224.0
  neighbor 122.102.10.1 remote-as 130
  neighbor 122.102.10.1 prefix-list default in
  neighbor 122.102.10.1 prefix-list my-block out
  !
  ip prefix-list my-block permit 121.10.0.0/19
  ip prefix-list default permit 0.0.0.0/0
  !
  ip route 121.10.0.0 255.255.224.0 null0
```



# One Upstream, Local Exchange Point

---

- ❑ Note Router A configuration
  - Prefix-list higher maintenance, but safer
  - No generation of AS110 aggregate
- ❑ IXP traffic goes to and from local IXP, everything else goes to upstream



# Aside:

## IXP Configuration Recommendations

---

- ❑ IXP peers
  - The peering ISPs at the IXP exchange prefixes they originate
  - Sometimes they exchange prefixes from neighbouring ASNs too
- ❑ Be aware that the IXP border router should carry only the prefixes you want the IXP peers to receive and the destinations you want them to be able to reach
  - Otherwise they could point a default route to you and unintentionally transit your backbone
- ❑ If IXP router is at IX, and distant from your backbone
  - Don't originate your address block at your IXP router

# Service Provider Multihoming



Two upstreams, one local peer

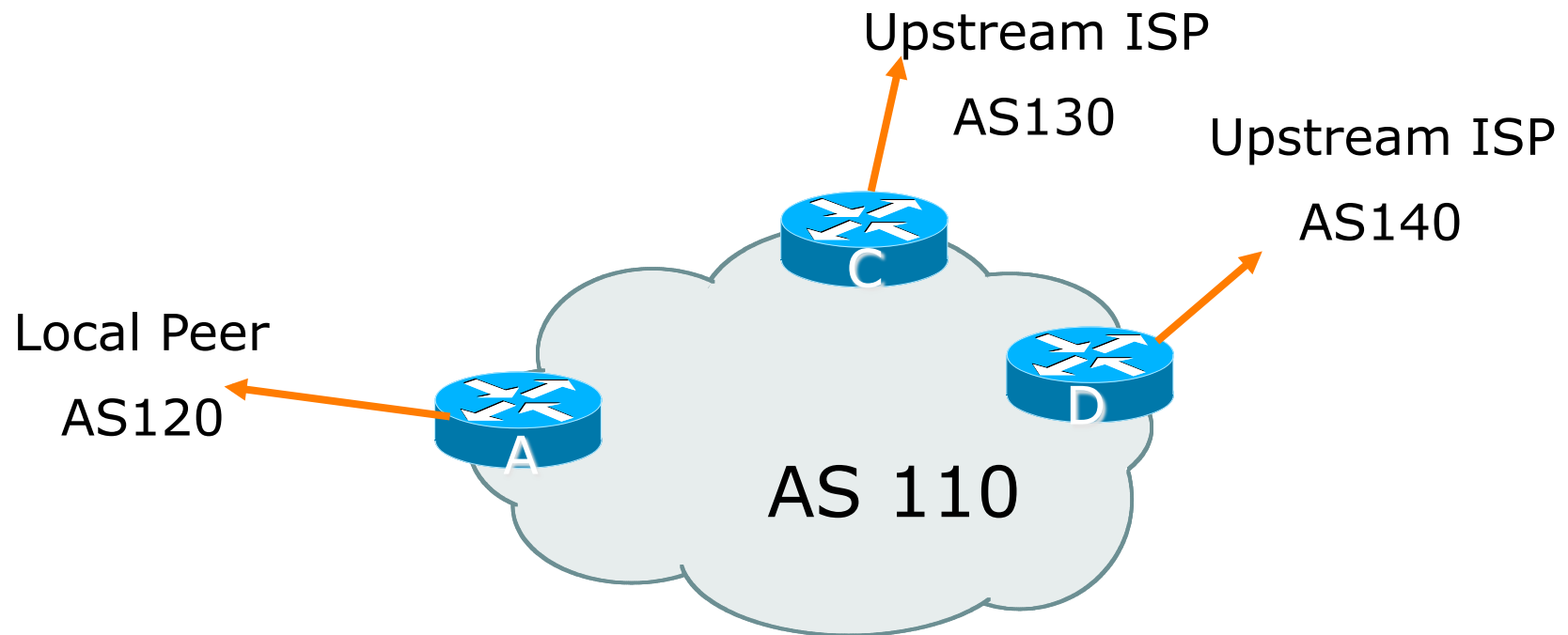
# Two Upstreams, One Local Peer

---

- ❑ Connect to both upstream transit providers to see the “Internet”
  - Provides external redundancy and diversity – the reason to multihome
- ❑ Connect to the local peer so that local traffic stays local
  - Saves spending valuable \$ on upstream transit costs for local traffic

# Two Upstreams, One Local Peer

---



# Two Upstreams, One Local Peer

---

- ❑ Announce /19 aggregate on each link
- ❑ Accept default route only from upstreams
  - Either 0.0.0.0/0 or a network which can be used as default
- ❑ Accept all routes originated by local peer
- ❑ Note separation of Router C and D
  - Single edge router means no redundancy
- ❑ Router A
  - Same routing configuration as in example with one upstream and one local peer

# Two Upstreams, One Local Peer

---

## ❑ Router C Configuration

```
router bgp 110
  network 121.10.0.0 mask 255.255.224.0
  neighbor 122.102.10.1 remote-as 130
  neighbor 122.102.10.1 prefix-list default in
  neighbor 122.102.10.1 prefix-list my-block out
  !
  ip prefix-list my-block permit 121.10.0.0/19
  ip prefix-list default permit 0.0.0.0/0
  !
  ip route 121.10.0.0 255.255.224.0 null0
```

# Two Upstreams, One Local Peer

---

## ❑ Router D Configuration

```
router bgp 110
  network 121.10.0.0 mask 255.255.224.0
  neighbor 122.102.10.5 remote-as 140
  neighbor 122.102.10.5 prefix-list default in
  neighbor 122.102.10.5 prefix-list my-block out
  !
  ip prefix-list my-block permit 121.10.0.0/19
  ip prefix-list default permit 0.0.0.0/0
  !
  ip route 121.10.0.0 255.255.224.0 null0
```



# Two Upstreams, One Local Peer

---

- ❑ This is the simple configuration for Router C and D
- ❑ Traffic out to the two upstreams will take nearest exit
  - Inexpensive routers required
  - This is not useful in practice especially for international links
  - Loadsharing needs to be better

# Two Upstreams, One Local Peer

---

- Better configuration options:
  - Accept full routing from both upstreams
    - **Expensive & unnecessary!**
  - Accept default from one upstream and some routes from the other upstream
    - **The way to go!**

# Two Upstreams, One Local Peer

## Full Routes

### ❑ Router C Configuration

```
router bgp 110
```

```
network 121.10.0.0 mask 255.255.224.0
```

```
neighbor 122.102.10.1 remote-as 130
```

```
neighbor 122.102.10.1 prefix-list rfc1918-deny in
```

```
neighbor 122.102.10.1 prefix-list my-block out
```

```
neighbor 122.102.10.1 route-map AS130-loadshare in
```

```
!
```

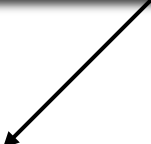
```
ip prefix-list my-block permit 121.10.0.0/19
```

```
! See www.cymru.com/Documents/bogon-list.html
```

```
! ...for "RFC1918 and friends" list
```

```
...next slide
```

Allow all prefixes in  
apart from RFC1918  
and friends



# Two Upstreams, One Local Peer

## Full Routes

---

```
ip route 121.10.0.0 255.255.224.0 null0
!
ip as-path access-list 10 permit ^(130_)+$
ip as-path access-list 10 permit ^(130_)+_[0-9]+$
!
route-map AS130-loadshare permit 10
  match ip as-path 10
  set local-preference 120
!
route-map AS130-loadshare permit 20
  set local-preference 80
!
```

# Two Upstreams, One Local Peer

## Full Routes

### ❑ Router D Configuration

```
router bgp 110
```

```
network 121.10.0.0 mask 255.255.224.0
```

```
neighbor 122.102.10.5 remote-as 140
```

```
neighbor 122.102.10.5 prefix-list rfc1918-deny in
```

```
neighbor 122.102.10.5 prefix-list my-block out
```


```
!
```

```
ip prefix-list my-block permit 121.10.0.0/19
```

```
! See www.cymru.com/Documents/bogon-list.html
```

```
! ...for "RFC1918 and friends" list
```

Allow all prefixes in  
apart from RFC1918  
and friends



# Two Upstreams, One Local Peer

## Full Routes

---

- ❑ Router C configuration:
  - Accept full routes from AS130
  - Tag prefixes originated by AS130 and AS130's neighbouring ASes with local preference 120
    - ❑ Traffic to those ASes will go over AS130 link
  - Remaining prefixes tagged with local preference of 80
    - ❑ Traffic to other all other ASes will go over the link to AS140
- ❑ Router D configuration same as Router C without the route-map

# Two Upstreams, One Local Peer

## Full Routes

---

- Full routes from upstreams
  - Expensive – needs lots of memory and CPU
  - Need to play preference games
  - Previous example is only an example – real life will need improved fine-tuning!
  - Previous example doesn't consider inbound traffic – see earlier in presentation for examples

# Two Upstreams, One Local Peer

## Partial Routes: Strategy

---

- ❑ Ask one upstream for a default route
  - Easy to originate default towards a BGP neighbour
- ❑ Ask other upstream for a full routing table
  - Then filter this routing table based on neighbouring ASN
  - E.g. want traffic to their neighbours to go over the link to that ASN
  - Most of what upstream sends is thrown away
  - Easier than asking the upstream to set up custom BGP filters for you



# Two Upstreams, One Local Peer

## Partial Routes

### ❑ Router C Configuration

```
router bgp 110
  network 121.10.0.0 mask 255.255.224.0
  neighbor 122.102.10.1 remote-as 130
  neighbor 122.102.10.1 prefix-list rfc1918-nodef-deny in
  neighbor 122.102.10.1 prefix-list my-block out
  neighbor 122.102.10.1 filter-list 10 in
  neighbor 122.102.10.1 route-map tag-default-low in
!
```

...next slide

Allow all prefixes and default in; deny RFC1918 and friends

AS filter list filters prefixes based on origin ASN

# Two Upstreams, One Local Peer

## Partial Routes

---

```
ip prefix-list my-block permit 121.10.0.0/19
ip prefix-list default permit 0.0.0.0/0
!
ip route 121.10.0.0 255.255.224.0 null0
!
ip as-path access-list 10 permit ^(130_)+$
ip as-path access-list 10 permit ^(130_)+_[0-9]+$
!
route-map tag-default-low permit 10
  match ip address prefix-list default
  set local-preference 80
!
route-map tag-default-low permit 20
!
```

# Two Upstreams, One Local Peer

## Partial Routes

---

### ❑ Router D Configuration

```
router bgp 110
  network 121.10.0.0 mask 255.255.224.0
  neighbor 122.102.10.5 remote-as 140
  neighbor 122.102.10.5 prefix-list default in
  neighbor 122.102.10.5 prefix-list my-block out
!
ip prefix-list my-block permit 121.10.0.0/19
ip prefix-list default permit 0.0.0.0/0
!
ip route 121.10.0.0 255.255.224.0 null0
```

# Two Upstreams, One Local Peer

## Partial Routes

---

- ❑ Router C configuration:
  - Accept full routes from AS130
    - ❑ (or get them to send less)
  - Filter ASNs so only AS130 and AS130's neighbouring ASes are accepted
  - Allow default, and set it to local preference 80
  - Traffic to those ASes will go over AS130 link
  - Traffic to other all other ASes will go over the link to AS140
  - If AS140 link fails, backup via AS130 – and vice-versa

# Two Upstreams, One Local Peer

## Partial Routes

---

### ❑ Router C IGP Configuration

```
router ospf 110
default-information originate metric 30
passive-interface Serial 0/0
!
ip route 0.0.0.0 0.0.0.0 serial 0/0 254
```

### ❑ Router D IGP Configuration

```
router ospf 110
default-information originate metric 10
passive-interface Serial 0/0
!
ip route 0.0.0.0 0.0.0.0 serial 0/0 254
```

# Two Upstreams, One Local Peer

## Partial Routes

---

- ❑ Partial routes from upstreams
  - Use OSPF to determine outbound path
  - Router D default has metric 10 – primary outbound path
  - Router C default has metric 30 – backup outbound path
  - Serial interface goes down, static default is removed from routing table, OSPF default withdrawn

# Two Upstreams, One Local Peer

## Partial Routes

---

- Partial routes from upstreams
  - Not expensive – only carry the routes necessary for loadsharing
  - Need to filter on AS paths
  - Previous example is only an example – real life will need improved fine-tuning!
  - Previous example doesn't consider inbound traffic – see earlier in presentation for examples

# Aside:

## Configuration Recommendation

---

- ❑ When distributing internal default by iBGP or OSPF/ISIS
  - Make sure that routers connecting to private peers or to IXPs do **NOT** carry the default route
  - Otherwise they could point a default route to you and unintentionally transit your backbone
  - Simple fix for Private Peer/IXP routers:

```
ip route 0.0.0.0 0.0.0.0 null0
```



# Service Provider Multihoming



Three upstreams, unequal  
bandwidths

# Three upstreams, unequal bandwidths

---

- ❑ Autonomous System has three upstreams
  - 16Mbps to ISP A
  - 8Mbps to ISP B
  - 4Mbps to ISP C
- ❑ What is the strategy here?
  - One option is full table from each
    - ❑ 3x 450k prefixes  $\Rightarrow$  1350k paths
  - Other option is partial table and defaults from each
    - ❑ How??

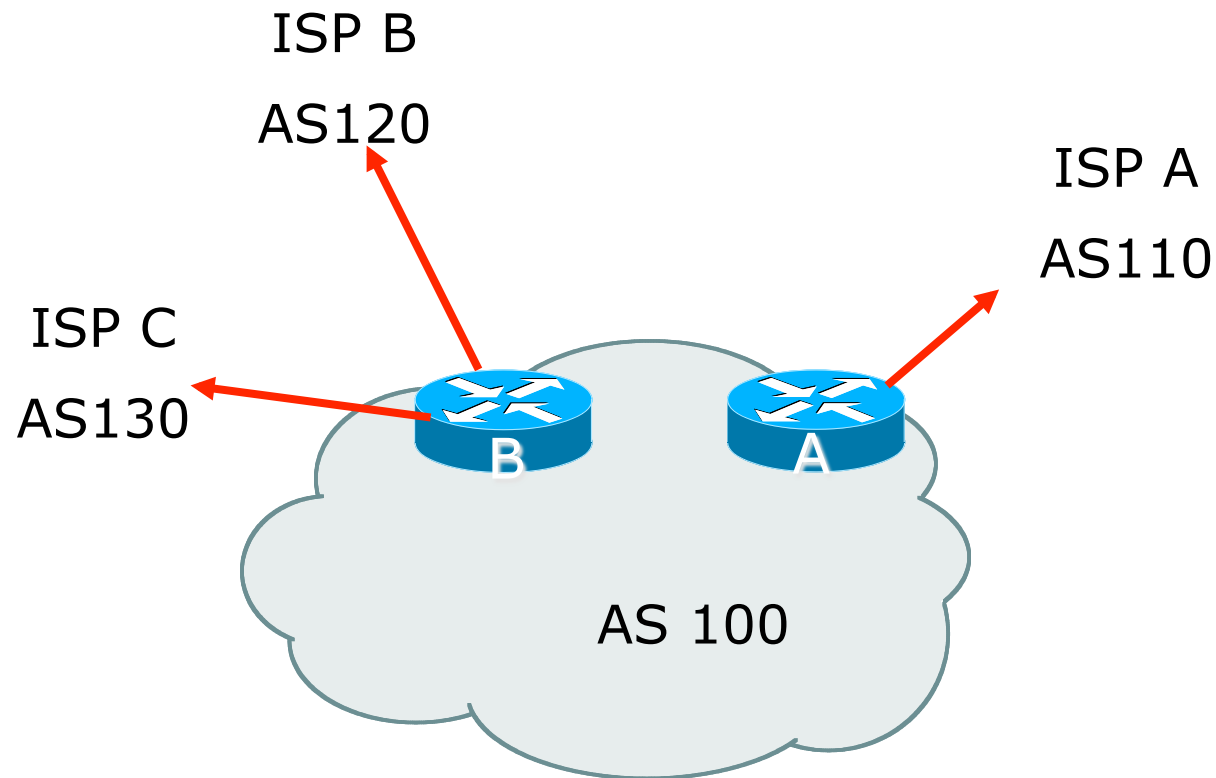
# Strategy

---

- ❑ Two external routers (gives router redundancy)
  - Do **NOT** need three routers for this
- ❑ Connect biggest bandwidth to one router
  - Most of inbound and outbound traffic will go here
- ❑ Connect the other two links to the second router
  - Provides maximum backup capacity if primary link fails
- ❑ Use the biggest link as default
  - Most of the inbound and outbound traffic will go here
- ❑ Do the traffic engineering on the two smaller links
  - Focus on regional traffic needs

# Diagram

---



- ❑ Router A has 16Mbps circuit to ISP A
- ❑ Router B has 8Mbps and 4Mbps circuits to ISPs B&C

# Outbound load-balancing strategy

---

- ❑ Available BGP feeds from Transit providers:
  - Full table
  - Customer prefixes and default
  - Default Route
- ❑ These are the common options on Internet today
  - Very rare for any provider to offer anything different
  - Very rare for any provider to customise BGP feed for a customer

# Outbound load-balancing strategy

---

- ❑ Accept only a default route from the provider with the **largest** connectivity, ISP A
  - Because most of the traffic is going to use this link
- ❑ If ISP A won't provide a default:
  - Still run BGP with them, but discard all prefixes
  - Point static default route to the upstream link
  - Distribute the default in the IGP
- ❑ Request the full table from ISP B & C
  - Most of this will be thrown away
  - (“Default plus customers” is not enough)

# Outbound load-balancing strategy

---

- ❑ How to decide what to keep and what to discard from ISPs B & C?
  - Most traffic will use ISP A link — so we need to find a good/useful subset
- ❑ Discard prefixes transiting the global transit ISPs
  - Global transit ISPs generally appear in most non-local or regional AS-PATHs
- ❑ Discard prefixes with ISP A's ASN in the path
  - Makes more sense for traffic to those destinations to go via the link to ISP A

# Outbound load-balancing strategy

---

- Global Transit ISPs include:

209	CenturyLink	3549	Level 3
701	VerizonBusiness	3356	Level 3
1239	Sprint	3561	Savvis
1668	AOL TDN	7018	AT&T
2914	NTT America		



# ISP B peering Inbound AS-PATH filter

---

```
ip as-path access-list 1 deny _209_  
ip as-path access-list 1 deny _701_  
ip as-path access-list 1 deny _1239_  
ip as-path access-list 1 deny _3356_  
ip as-path access-list 1 deny _3549_  
ip as-path access-list 1 deny _3561_  
ip as-path access-list 1 deny _2914_  
ip as-path access-list 1 deny _7018_  
!  
ip as-path access-list 1 deny _ISPA_ ←  
ip as-path access-list 1 deny _ISPC_  
!  
ip as-path access-list 1 permit _ISPB$  
ip as-path access-list 1 permit _ISPB_[0-9]+$  
ip as-path access-list 1 permit _ISPB_[0-9]+_[0-9]+$  
ip as-path access-list 1 permit _ISPB_[0-9]+_[0-9]+_[0-9]+$  
ip as-path access-list 1 deny .*
```

Don't need ISPA and  
ISPC prefixes via ISPB

# Outbound load-balancing strategy: ISP B peering configuration

---

- ❑ Part 1: Dropping Global Transit ISP prefixes
  - This can be fine-tuned if traffic volume is not sufficient
  - (More prefixes in = more traffic out)
- ❑ Part 2: Dropping prefixes transiting ISP A & C network
- ❑ Part 3: Permitting prefixes from ISP B, their BGP neighbours, and their neighbours, and their neighbours
  - More AS\_PATH permit clauses, the more prefixes allowed in, the more egress traffic
  - Too many prefixes in will mean more outbound traffic than the link to ISP B can handle

# Outbound load-balancing strategy

---

- ❑ Similar AS-PATH filter can be built for the ISP C BGP peering
- ❑ If the same prefixes are heard from both ISP B and C, then establish proximity of their origin ASN to ISP B or C
  - e.g. ISP B might be in Japan, with the neighbouring ASN in Europe, yet ISP C might be in Europe
  - Transit to the ASN via ISP C makes more sense in this case

# Inbound load-balancing strategy

---

- ❑ The largest outbound link should announce just the aggregate
- ❑ The other links should announce:
  - a) The aggregate with AS-PATH prepend
  - b) Subprefixes of the aggregate, chosen according to traffic volumes to those subprefixes, and according to the services on those subprefixes
- ❑ Example:
  - Link to ISP B could be used just for Broadband/Dial customers — so number all such customers out of one contiguous subprefix
  - Link to ISP C could be used just for commercial leased line customers — so number all such customers out of one contiguous subprefix

# Router A: eBGP Configuration Example

---

```
router bgp 100
  network 100.10.0.0 mask 255.255.224.0
  neighbor 122.102.10.1 remote 110
  neighbor 122.102.10.1 prefix-list default in
  neighbor 122.102.10.1 prefix-list aggregate out
!
ip prefix-list default permit 0.0.0.0/0
ip prefix-list aggregate permit 100.10.0.0/19
!
```

# Router B: eBGP Configuration Example

---

```
router bgp 100
  network 100.10.0.0 mask 255.255.224.0
  neighbor 120.103.1.1 remote 120
  neighbor 120.103.1.1 filter-list 1 in
  neighbor 120.103.1.1 prefix-list ISP-B out
  neighbor 120.103.1.1 route-map to-ISP-B out
  neighbor 121.105.2.1 remote 130
  neighbor 121.105.2.1 filter-list 2 in
  neighbor 121.105.2.1 prefix-list ISP-C out
  neighbor 121.105.2.1 route-map to-ISP-C out
!
ip prefix-list aggregate permit 100.10.0.0/19
!
...next slide
```

# Router B: eBGP Configuration

## Example

---

```
ip prefix-list ISP-B permit 100.10.0.0/19
ip prefix-list ISP-B permit 100.10.0.0/21
!
ip prefix-list ISP-C permit 100.10.0.0/19
ip prefix-list ISP-C permit 100.10.28.0/22
!
route-map to-ISP-B permit 10
  match ip address prefix-list aggregate
  set as-path prepend 100
!
route-map to-ISP-B permit 20
!
route-map to-ISP-C permit 10
  match ip address prefix-list aggregate
  set as-path prepend 100 100
!
route-map to-ISP-C permit 20
```

/21 to ISP B  
“dial customers”

/22 to ISP C  
“biz customers”

e.g. Single  
prepend on ISP B  
link

e.g. Dual prepend  
on ISP C link

# What about outbound backup?

---

- We have:

- Default route from ISP A by eBGP
- Mostly discarded full table from ISPs B&C

- Strategy:

- Originate default route by OSPF on Router A (with metric 10) — link to ISP A
- Originate default route by OSPF on Router B (with metric 30) — links to ISPs B & C
- Plus on Router B:
  - Static default route to ISP B with distance 240
  - Static default route to ISP C with distance 245
- When link goes down, static route is withdrawn



# Outbound backup: steady state

---

- Steady state (all links up and active):
  - Default route is to Router A — OSPF metric 10
  - (Because default learned by eBGP  $\Rightarrow$  default is in RIB  $\Rightarrow$  OSPF will originate default)
  - Backup default is to Router B — OSPF metric 20
  - eBGP prefixes learned from upstreams distributed by iBGP throughout backbone
  - (Default can be filtered in iBGP to avoid “RIB failure error”)

# Outbound backup: failure examples

---

- ❑ Link to ISP A down, to ISPs B&C up:
  - Default route is to Router B — OSPF metric 20
  - (eBGP default gone from RIB, so OSPF on Router A withdraws the default)
- ❑ Above is true if link to B or C is down as well
- ❑ Link to ISPs B & C down, link to ISP A is up:
  - Default route is to Router A — OSPF metric 10
  - (static defaults on Router B removed from RIB, so OSPF on Router B withdraws the default)

# Other considerations

---

- ❑ Default route should not be propagated to devices terminating non-transit peers and customers
- ❑ Rarely any need to carry default in iBGP
  - Best to filter out default in iBGP mesh peerings
- ❑ Still carry other eBGP prefixes across iBGP mesh
  - Otherwise routers will follow default route rules resulting in suboptimal traffic flow
  - Not a big issue because not carrying full table

# Router A: iBGP Configuration Example

---

```
router bgp 100
  network 100.10.0.0 mask 255.255.224.0
  neighbor ibgp-peers peer-group
  neighbor ibgp-peers remote-as 100
  neighbor ibgp-peers prefix-list ibgp-filter out
  neighbor 100.10.0.2 peer-group ibgp-peers
  neighbor 100.10.0.3 peer-group ibgp-peers
!
ip prefix-list ibgp-filter deny 0.0.0.0/0
ip prefix-list ibgp-filter permit 0.0.0.0/0 le 32
!
```

# Three upstreams, unequal bandwidths:

## Summary

---

- ❑ Example based on many deployed working multihoming/loadbalancing topologies
- ❑ Many variations possible — this one is:
  - Easy to tune
  - Light on border router resources
  - Light on backbone router infrastructure
  - Sparse BGP table  $\Rightarrow$  faster convergence

# Service Provider Multihoming



ISP Workshops